



DRAFT AS AT 20TH JANUARY 2022

South West Community Plan

Crookes & Crosspool Dore & Totley Ecclesall Fulwood

Contents

What are Local Area Committees (LACs)?	Section 1
About the South West	Section 2
How we engaged with the South West community	Section 3
What you said about the South West area and what we found out through the engagement	Section 4
The Community Priorities and Action Plan	Section 5

Section 1

What are Local Area Committees (LACs)?

Page 3



Local Area Committees (LACs) are a way for people to get involved in making a difference to their local communities. Some budgets have already been devolved to the LACs for them to be used on issues and priorities that residents and communities have told us are important to them.

LACs are a chance for people to influence decision making, share their opinion and contribute to positive changes in their community. They are an opportunity for people to say what they would like to see improved in their area.

Whilst LACs have some initial devolved powers, the devolution of further powers will continue to evolve.

Further details about LACs can be found here - www.sheffield.gov.uk/home/your-city-council/local-area-committees



**Local Area
Committees**

Engage · Empower · Enable

Who are the Committee Members?

The South West Local Area Committee is made up of twelve elected Councillors, representing the four Council wards included within the South West LAC.

Crookes & Crosspool



Mohammed Mahroof

Email:

mohammed.mahroof@councillor.sheffield.gov.uk



Ruth Milsom

Email:

ruth.Milsom@councillor.sheffield.gov.uk



Tim Huggan

Email:

tim.huggan@councillor.sheffield.gov.uk

Dore & Totley



Colin Ross

Email:

colin.ross@councillor.sheffield.gov.uk



Joe Otten - South West LAC Vice Chair

Email:

joe.otten@councillor.sheffield.gov.uk



Martin Smith

Email:

martin.smith@councillor.sheffield.gov.uk

Who are the Committee Members?

Ecclesall



Barbara Masters

Email:
barbara.masters@councillor.sheffield.gov.uk



Roger Davison

Email:
roger.davison@councillor.sheffield.gov.uk



Shaffaq Mohammed

Email:
shaffaq.mohammed@councillor.sheffield.gov.uk

Fulwood



**Andrew Sangar –
South West LAC Chair**

Email:
andrew.sangar@councillor.sheffield.gov.uk



Cliff Woodcraft

Email:
cliff.woodcraft@councillor.sheffield.gov.uk



Sue Alston

Email:
sue.alston@councillor.sheffield.gov.uk

All the Councillors can be contacted either via their email addresses or by calling the Town Hall on 0114 2735380

Who else is involved?

Nik Hamilton
Head of Service –
Communities



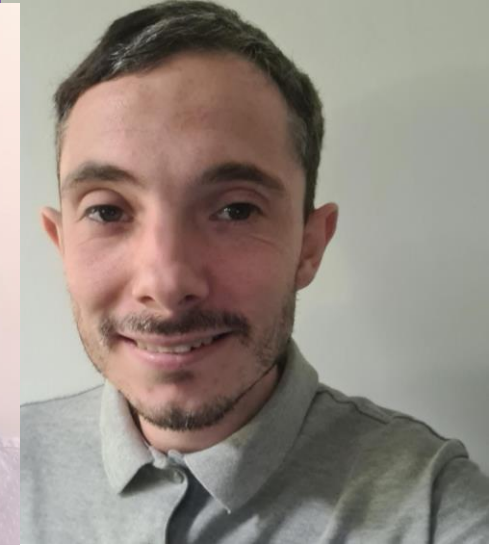
Denise Devoto
SW LAC Manager



Mubarak Hassan
SW Community
Services Officer



George Whitehouse
SW Project Officer



Page 7

The team can be contacted by email on southwestLAC@sheffield.gov.uk or by telephone on 0114 474 3651

The South West LAC webpage can be found via www.sheffield.gov.uk/southwestlac

Social media links can also be found on:-

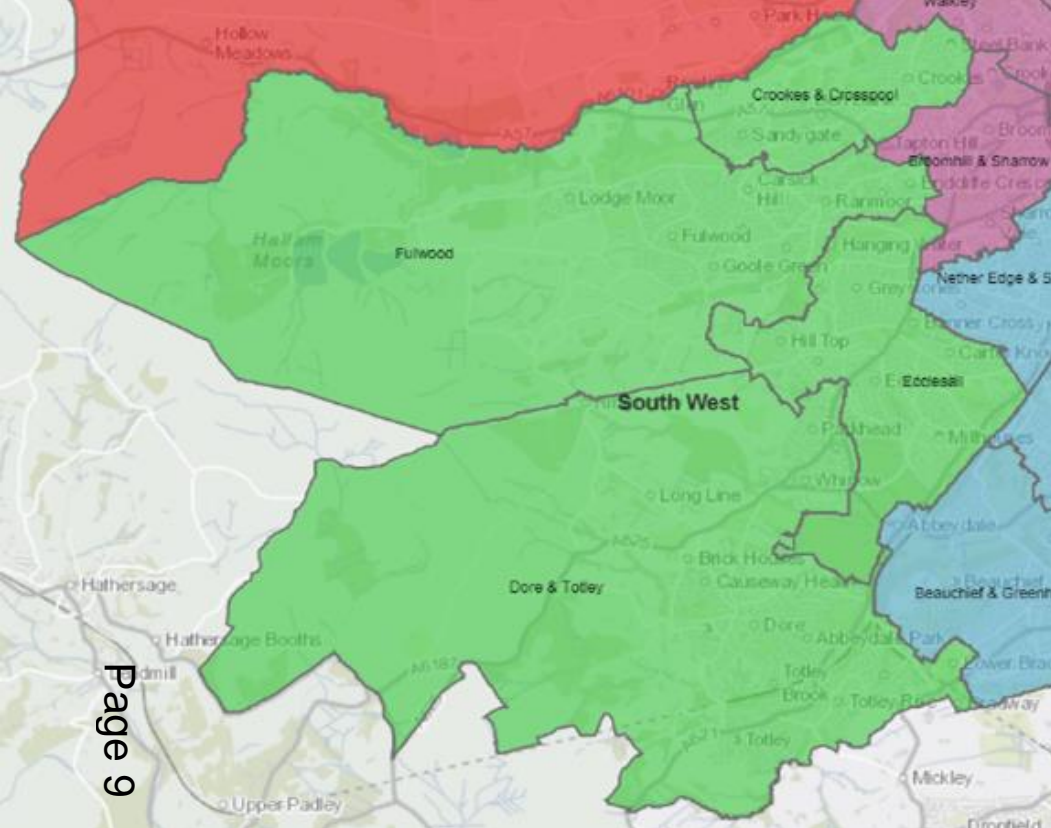
- Facebook - <https://www.facebook.com/SouthWestLACs>
- Twitter here – <https://twitter.com/SouthWestSheff>
- Next Door App here - <https://nextdoor.co.uk/agency-detail/england/south-yorkshire/sheffield-city-council/>

Section 2

About the South West Area

Page 8





Page 9

The South West is one of seven LACs - it consists of four Council wards, which are:

Crookes & Crosspool

Dore & Totley

Ecclesall

Fulwood



What we know about the South West area.....

(The demographics information provided here will be updated further from the results of the 2021 Census once known later in the year)

South West has a population of **77,786**

Age
0-15 16.8%
Working Age 62.6%
Age 65+ 20.6%

White British **87%**
Black, Asian, Ethnic Minority **9.5%**
White (Non - British) **3.5%**



Ethnicity
Multi - Ethnic Households **9.9%**

12,400 People are living in deprivation

(measured on one or more of the indices of deprivation, as at 2011 Census, to be updated after 2021 Census results received)



10% of people have no qualifications (compared with 22% across England)



14% have a limiting long-term illness. (compared with 18% across England)

Gender 49.3% Male 50.7% Female



Non-binary/other to be updated after 2021 Census

Main Industry Sectors

- 1. Education
- 2. Health & Social Work
- 3. Retail

The average household income is **£55,806** (Compared to England Average of £43,966)

Tenure



78.5% are Homeowners
3.8% Rent from the council
1.8% Rent from Housing Associations
13.4% are Private Renting

Section 3

How we engaged with the South West community

Page 11



What engagement we did ...

- We held our first public meeting in September 2021 to launch the SW LAC.
- We created a contact database which includes Voluntary, Community and Faith Sector (VCFS) groups/organisations, partners and residents to either correspond with by email or by post. Updates also sent via the SW GovDelivery email distribution list to approx. 7,500 people.
- We published regular press releases on Sheff News Home | SheffNews. and also in other local publications including: Bradway Bugle; Dore to Door; Totley Independent; Southside and Westside; Grapevine and S10 Magazine.
- We delivered a citywide newsletter to all residential properties to introduce LACs and provided members of the public with contact details for all LAC teams.



Page 12

16 September - SW LAC Public Meeting held at Greystones School

What engagement we did ... continued

- Posted on our social media pages: Facebook, Twitter and Next Door. We will continue to publish items to promote activity and future public LAC meetings, as well as items of interest relating to LACs and other community events.
- Kept our webpages up to date – see: <https://www.sheffield.gov.uk/home/your-city-council/south-west-local-area-committee>
- A city-wide Citizen Space survey that we circulated/promoted on relevant sites and sent to our contacts database, including GovDelivery list.
- Paper surveys were sent to people who requested them. Surveys were also delivered to a variety of businesses, shops, cafes and all churches across the SW.
- Contacted all groups/organisations on our contact list for the team to attend meetings/events to discuss LACs and the survey.

Page 13



The image shows a screenshot of a survey titled "Tell us what matters to you" from Sheffield Council. At the top, there is a logo for "Local Area Committees" with the tagline "Engage - Empower - Enable". Below the logo is a colorful graphic consisting of overlapping curved shapes in shades of purple, pink, red, orange, yellow, and green. The main heading of the survey is "Tell us what matters to you" in a bold, pink font. The text below the heading explains that Sheffield Council has set up 7 Local Area Committees to help them better listen and connect with local communities. It states that they will be talking to local communities over the coming months to shape how the Local Area Committees will work, but they want them to have real power to address local issues. The Local Area Committees will be led by local Councillors and will offer a wide range of opportunities for involvement, recognising that people want to get involved at different levels and in different ways. This will include holding regular public meetings in the community. Right now, they really want to hear from local communities about what matters to you, so please share your views. Below this text is a section titled "Please tell us a little bit about you..." which contains a form with several questions and checkboxes. The questions are: "My neighbourhood is" (with a text input field), "I consider myself to be a disabled person" (Yes/No), "I belong to a Black, Asian or Minority Ethnic Group" (Yes/No), "My age group" (I am under 20 years old, I am between 21-35, I am between 36-50, I am over 50), "My gender" (I am male, I am female, I am non binary / other), "I am a member of an LGBT+ community" (Yes/No), and "Do you look after a family member / friend as an unpaid carer?" (Yes/No). The Sheffield City Council logo is visible in the bottom right corner of the survey form.

Engagement will be a continuous part of the LAC's role – your comments, feedback and ideas are an integral part of our work in the SW area.

Section 4

What you said about the South West area and what we found through engagement

Page 14



Number of completed surveys received and the Council ward the South West respondents were from...

We had **1,303** responses for the South West LAC area

1,155 responses were online surveys

148 were from paper surveys

Page 15

Wards where respondents live

Crookes & Crosspool

25%

Dore & Totley

21%

Ecclesall

37%

Fulwood

17%

Who replied to our survey in the South West?

The information on this page shows some of the demographics of the 1303 people in the South West who responded to the survey and has been obtained from the equalities questions asked in the survey. This is different from the demographics information that is provided on page 10 which is provided for the whole population of 77,786 people living in the South West.

What tenure type did respondents have?

- 80.5% homeowners.
- 0.8% rent from the Council.
- 0.5% rent from other social landlords.
- 3.5% rent from a private landlord.
- 9.9% lived with family.
- 13.8% didn't say.

What were the ages of the respondents?

- 2% under the age of 20.
- 58% aged between 20-64.
- 40% aged 65 or over.

What were the gender of the respondents?

- 40% male.
- 57% female.
- 0.5% non-binary / other.
- 2.5% preferred not to say.

Other information for the respondents

- 13% said they have a disability or a long term condition or illness that is limiting to their life.
- 15% said they are unpaid carer.
- 49% had no religion or belief, 45% followed a religion and 6% preferred not to say.
- 88% were white British, 4% were Black, Asian, Ethnic Minority and 2% said they were white Non-British – 6% of people preferred not to say.

It is important to note that whilst this page gives information on the respondents to the survey, the LAC will consider all demographic information available for South West population to inform any decisions that they will make on how budgets are spent on the priorities identified for the South West.

What respondents said

Likes



- **Countryside, Parks, Green spaces and lots of trees.**
- **Close to the City and Peak District.**
- **Not far from local shops and amenities.**
- **Friendly neighbours, community and good atmosphere.**
- **Good schools.**
- **Responsive Councillors.**
- **Quiet and safe.**
- **Good buses.**

Improvements

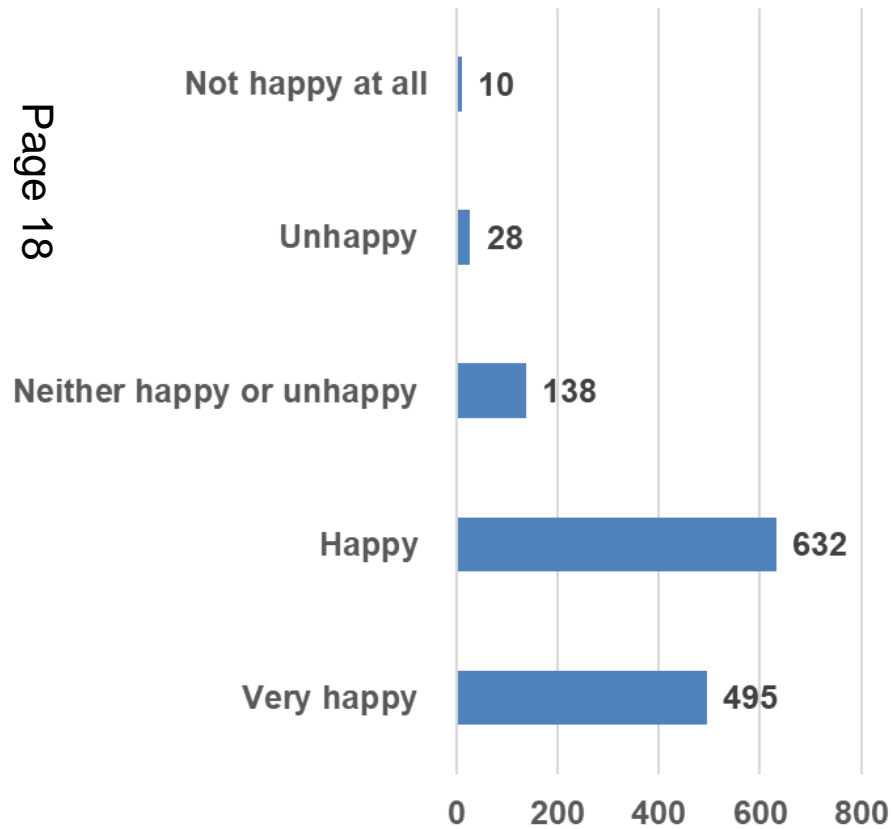


- **More frequent buses.**
- **Stop speeding vehicles.**
- **Improve recycling options to include more plastic etc.**
- **Improve street and footpath maintenance.**
- **Don't over develop existing housing sites and keep control of housing density.**
- **Increase police presence and patrols.**
- **Reduce anti-social behaviour (ASB) and crime.**

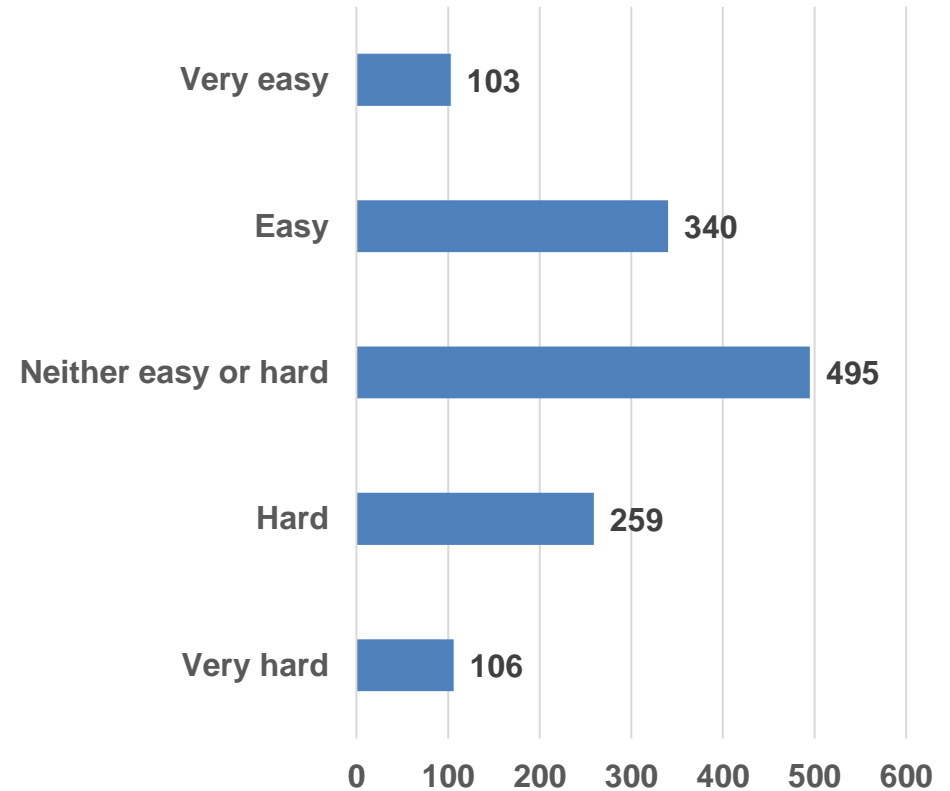
What respondents said *continued*

How happy do you feel with your local area where you live?

Page 18



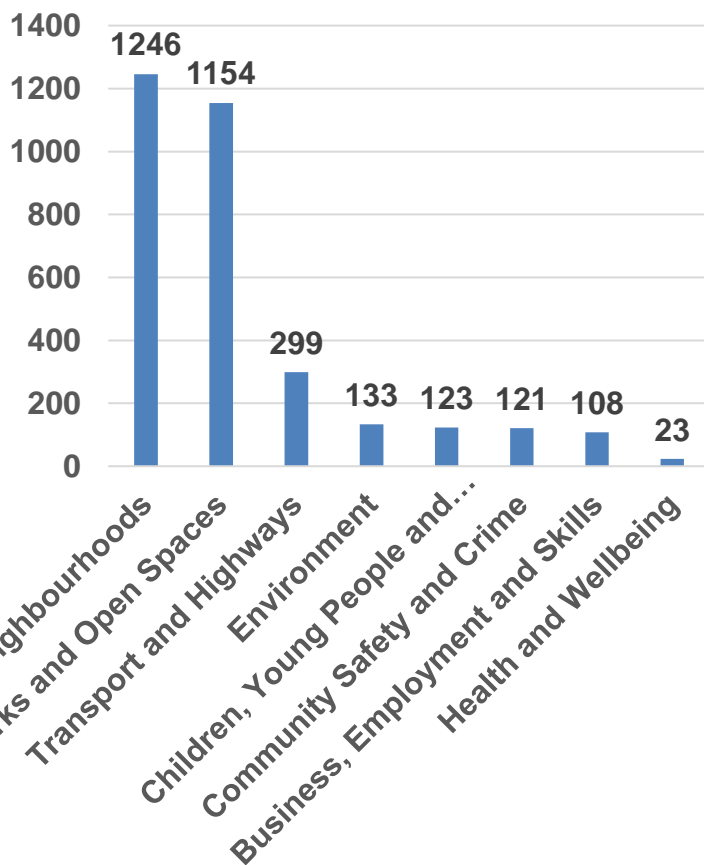
How easy is it to find out about news in your local area? e.g. events / activities



Key themes

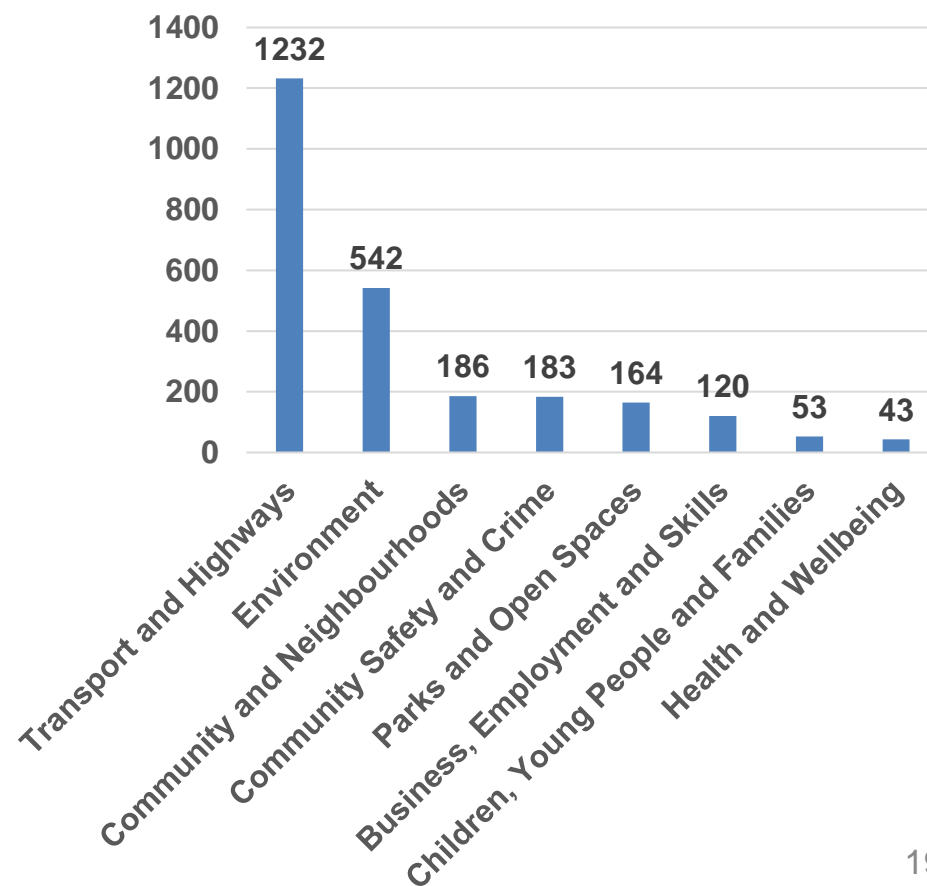
Likes

These are the areas respondents said they liked.



Improvements

These are the areas respondents said needed improving.



Section 5

The community priorities and action plan

Page 20



Priorities

The three priority themes that the survey identified are:



Transport & Highways



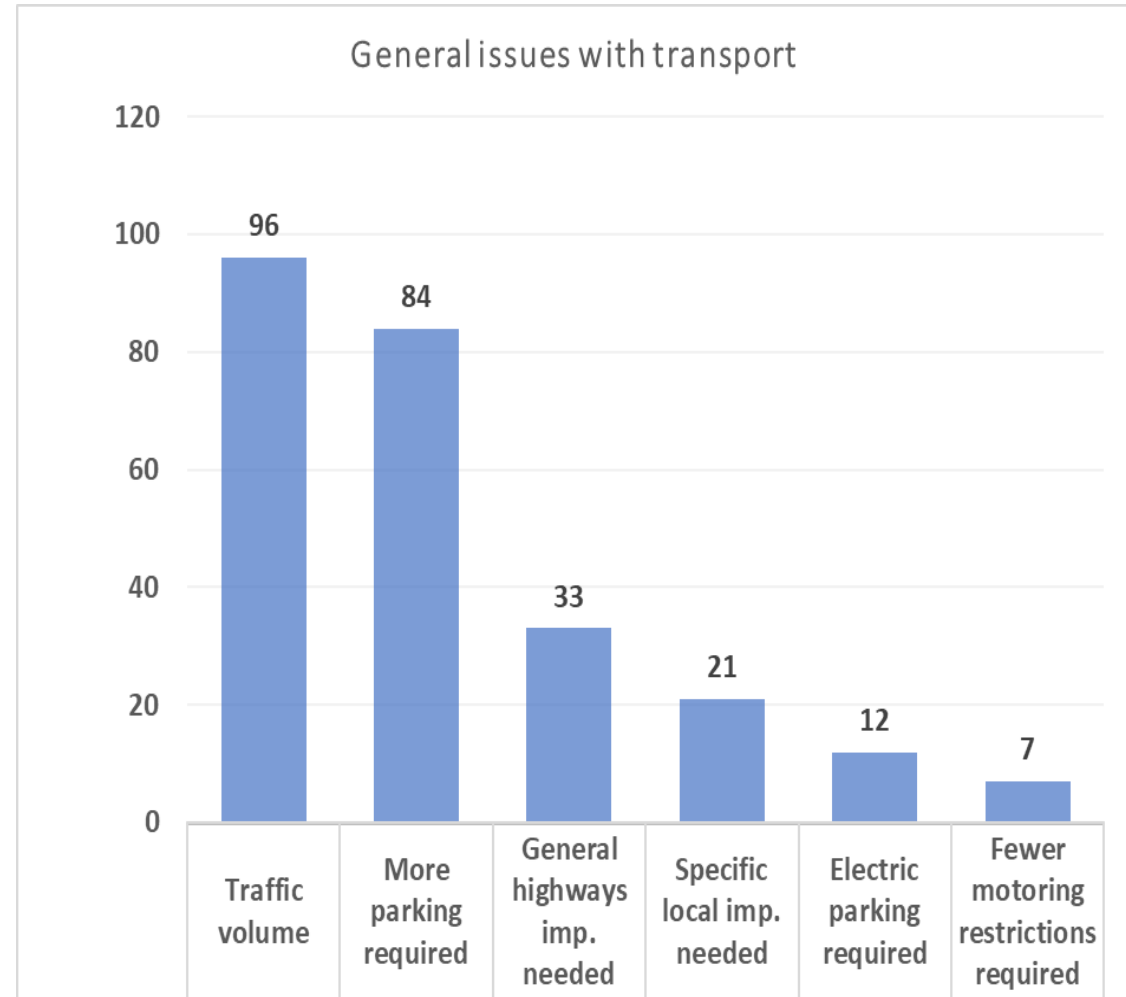
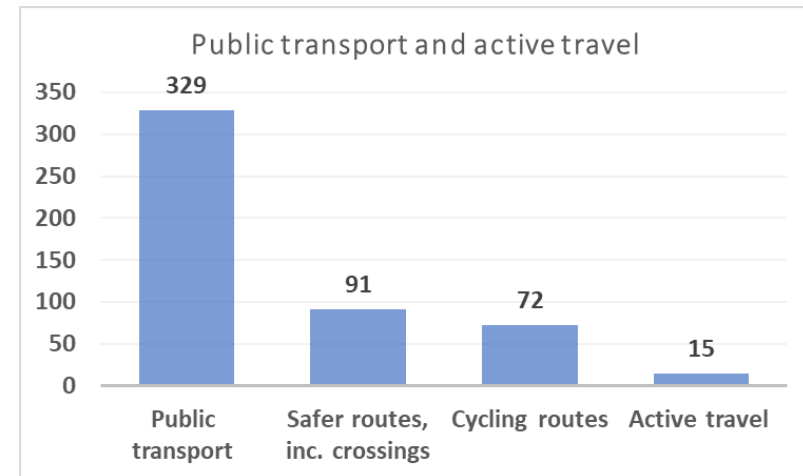
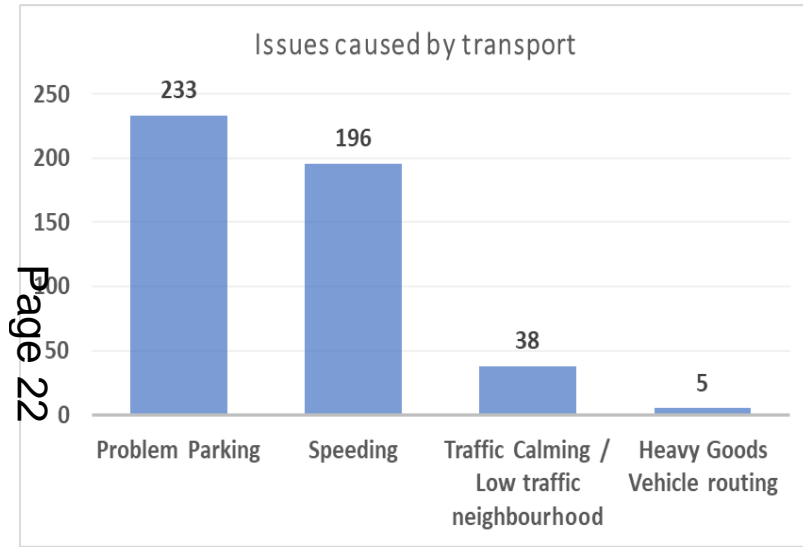
Local Environment



Community & Neighbourhoods

Transport & Highways

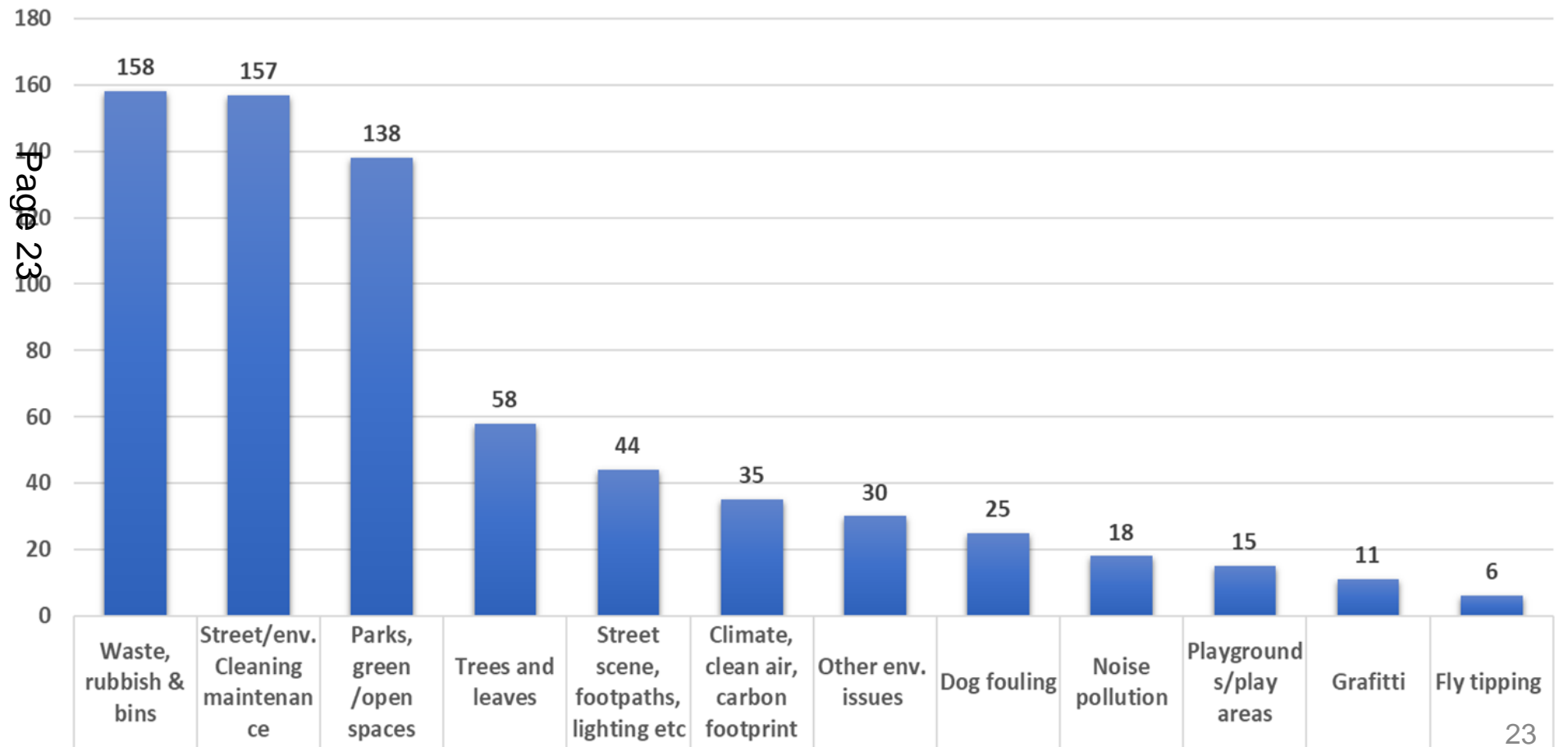
Under this theme, these are the areas that people said needed to be improved and a priority to address. They were grouped into three key areas – issues caused by transport, general issues with transport and public transport and active travel, which have been split down further to show the responses in the 3 categories.



Local Environment

Under this theme, respondents raised concerns in respect of insufficient clearance of autumn leaves, leading to slippery footpaths, in particular. They also raised concerns of potential flood risk issues due to reductions in the frequency of gully cleaning. Respondents were also keen to encourage greater recycling options, including the ability to recycle more plastics and other recyclable materials, as well ensuring fly-tipping and graffiti were tackled.

Respondents also wanted further improvements to be made to our parks and open green spaces, as well as playgrounds and play areas which we have included as part of the local environment.

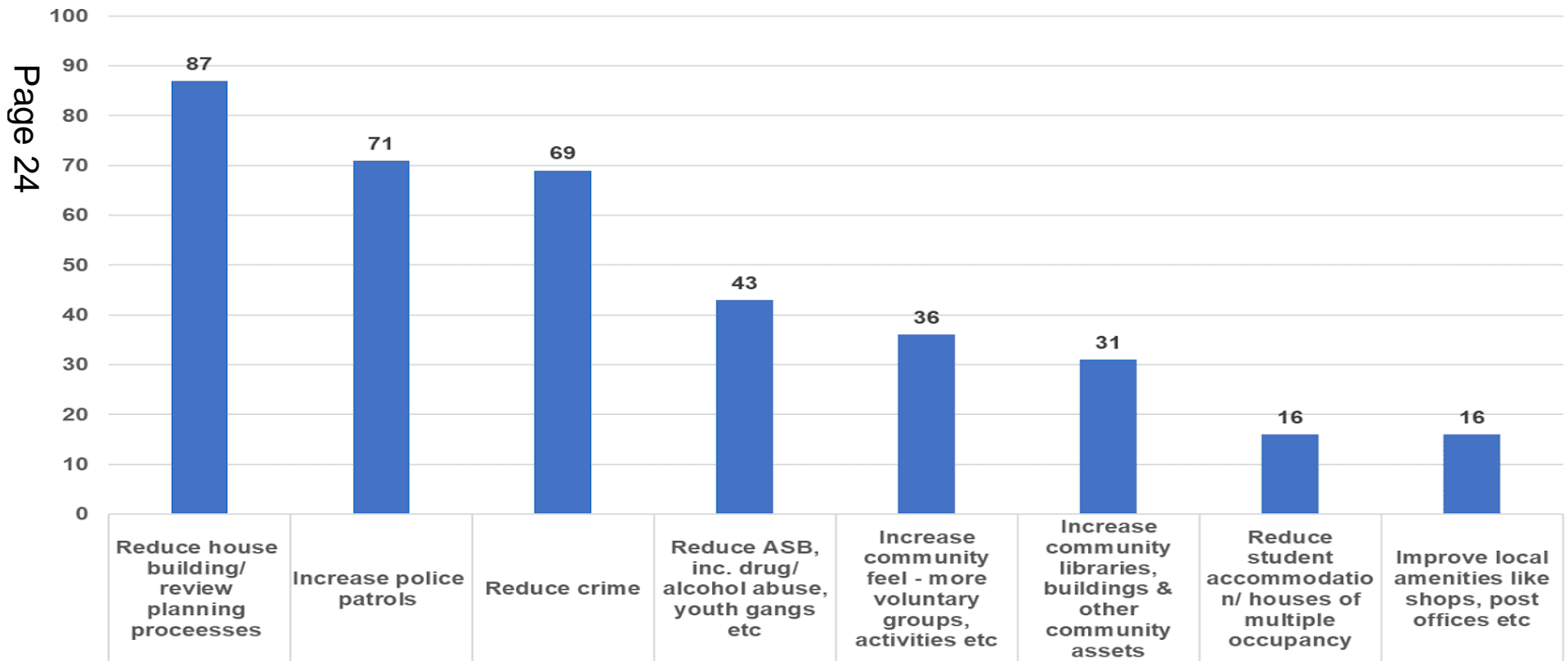


Page 23

Community & Neighbourhoods

Frequent responses made reference to friendly neighbours, a 'good atmosphere' and community spirit. However, loneliness and isolation was seen as a key issue experienced by many older people living in the area. Local shops and amenities were seen as key community assets, however, respondents felt that in some areas they needed improvement as they are key to neighbourhood vitality – providing services and employment opportunities at a local level. The closure of post offices and banks was a cause for concern.

A desire to see a reduction in crime was a common theme, as well as requests to see an increased police presence in the local area to tackle issues such as burglaries, anti-social behaviour in local parks and in the wider area, including drug dealing. Young adults congregating in gangs was often felt to be intimidating.





Transport & Highways

The SW LAC will work with the Council's Highways team and local partners to identify potential solutions and actions to some of the frequent issues raised.

Priority	Current ideas	New ideas discussed at public workshops
Road Safety	<ul style="list-style-type: none">• Implementation of 20mph zones in appropriate areas.• Installation of new Vehicle Activated Signs in all wards.• Review where new crossings may be required.	
Public Transport	<ul style="list-style-type: none">• Use our influence to improve bus services.• Improving bus shelters and information by liaising with appropriate organisations.	



Transport & Highways continued ...

The SW LAC will work with the Council's Highways team and local partners to identify potential solutions and actions to some of the frequent issues raised.

Priority	Current ideas	New ideas discussed at public workshops
Traffic and Parking	<ul style="list-style-type: none">• Explore restrictions to reduce inappropriate parking.• Explore resident parking schemes.• Encourage enforcement activity to prevent inappropriate parking.	
Cycling and Active Travel	<ul style="list-style-type: none">• Identify safe cycling routes and safe parking for cycles.• Identify and remove barriers in order to improve active travel.	

Page 26



Local Environment

The SW LAC will work with the Council's Environmental Services team, the Council's contractors and partners to identify potential solutions and actions to some of the frequent issues raised.

Priority	Current ideas	New ideas discussed at the workshop
Waste, rubbish and bins	<ul style="list-style-type: none">• Explore options to increase recycling.• Explore options for more communal bins/notices, particularly in parks for dog fouling.	
Street/environmental cleaning and maintenance	<ul style="list-style-type: none">• Support for voluntary litter picking groups.• Raise awareness of reporting mechanisms for street/highways issues.	
Parks, green and open spaces	<ul style="list-style-type: none">• Supporting Friends of Parks Groups.• Updating and renewal of play and fitness activities for all age ranges.• Encourage wild flower planting.	

Page 27



Local Environment continued...

The SW LAC will work with the Council's Environmental Services team, the Council's contractors and partners to identify potential solutions and actions to some of the frequent issues raised.

Priority	Current ideas	New ideas discussed at the workshop
Streetscene, footpaths, lighting etc.	<ul style="list-style-type: none">• Footpaths to be kept clear of encroaching plants/hedges etc.• Explore ability to dim street lights in specific areas.• Review gritting routes and grit bin locations.	
Trees and leaves	<ul style="list-style-type: none">• Better leaf clearance in late autumn.• Better maintenance of trees.	
Fly tipping and graffiti	<ul style="list-style-type: none">• Identify hot spots to work on.• Address issues at local bring sites.	

Page 28



Community & Neighbourhoods

The SW LAC will work with various services across the Council, statutory partners as well as community organisations and groups to identify potential solutions and actions to some of the frequent issues raised.

Priority	Current ideas	New ideas discussed at public workshops
Reduce ASB, youth gangs and nuisance. Page 29	<ul style="list-style-type: none"> • Work with young adults to help meet their aspirations in the local area and develop a scheme of activities. • Explore through Sustainable Community Officers to map hotspots to target resources where appropriate. 	
Reduce crime and address the perception and fear of crime.	<ul style="list-style-type: none"> • Work with South Yorkshire Police to raise awareness on prevention of crime and anti-social behaviour. • Support communities to set up / maintain Neighbourhood Watch Groups. • Work with the University to support students to reduce crime in their communities. • Learning from best practice for high quality public spaces that design out crime. 	



Community & Neighbourhoods cont..

The SW LAC will work with various services across the Council, statutory partners as well as community organisations and groups to identify potential solutions to some of the frequent issues raised.

Priority	Current ideas	New ideas discussed at public workshops
Encourage community involvement.	<ul style="list-style-type: none">• Provide support to establish new community groups where a need is identified.• Continue to work with the People Keeping Well team to support/identify isolated individuals.• Raise awareness of volunteering opportunities for all.	
Support in increasing the use of community assets, such as libraries and community buildings.	<ul style="list-style-type: none">• Use the Council's assets to promote and increase community use.• Encourage the use of libraries as community hubs.	

Page 30

What next?

The South West LAC will:-

- Continue to work with all LACs across the City to determine which further powers and budgets can be devolved to LACs.
- Hold four public meetings per year and provide an update on the progress of the Community Plan - the next one planned for 17th March to agree final Community Plan.
- Hold single issue meetings on topics of local interest where and when appropriate.
- Continue to engage and consult with communities to review priorities for the area.
- Provide an annual report on the Community Plan and progress against it to Full Council every year.
- Represent the interest of its communities with the Council and with other bodies / organisations as appropriate to achieve the objectives of the Community Plan.



This document can be supplied in alternative formats, please contact the team to request a copy.

Sheffield City Council - Local Area Committees:
part of the Empowering Communities Programme

www.sheffield.gov.uk/home/your-city-council/local-area-committees



SouthWestLAC@sheffield.gov.uk

0114 474 3651